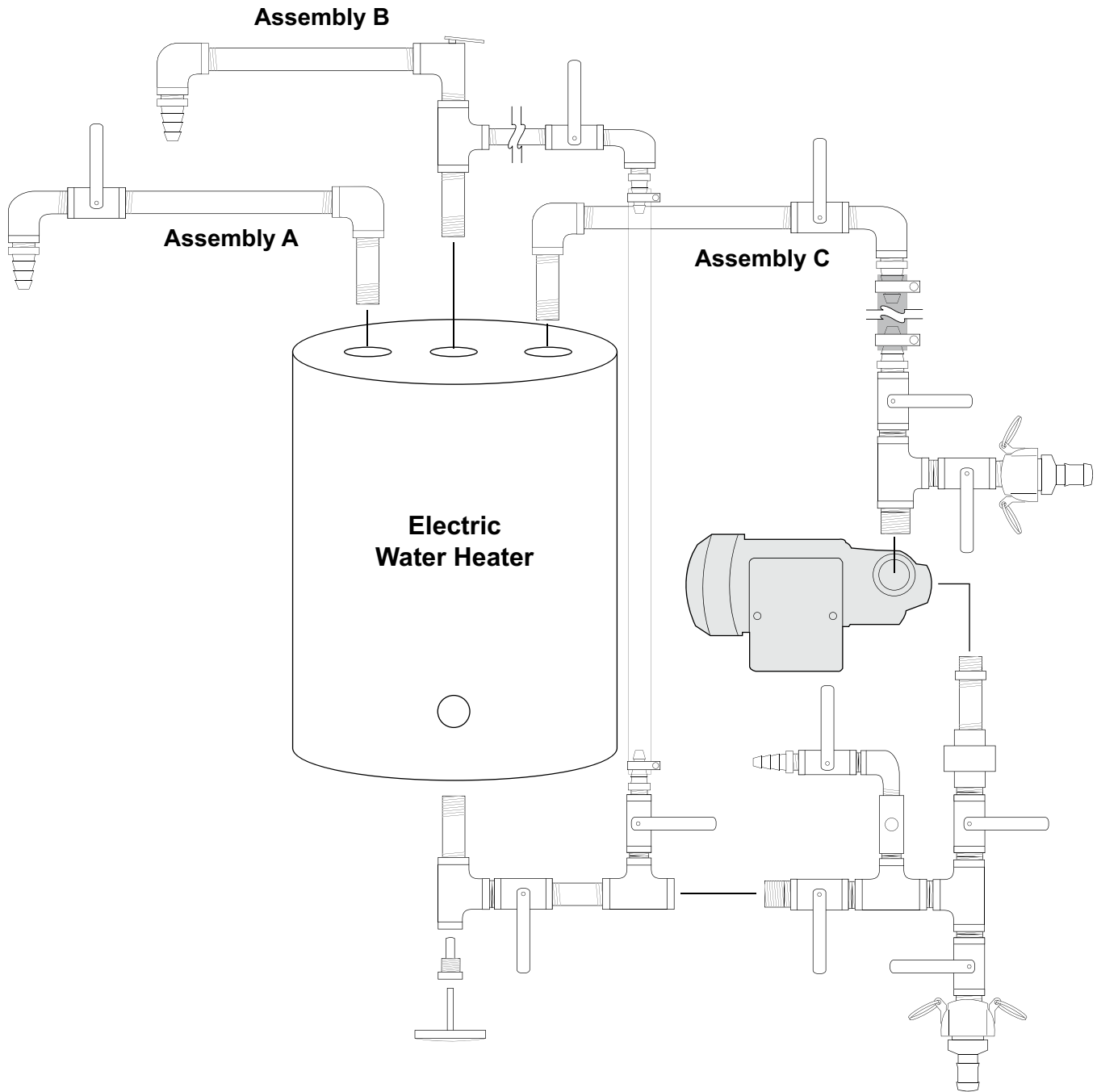
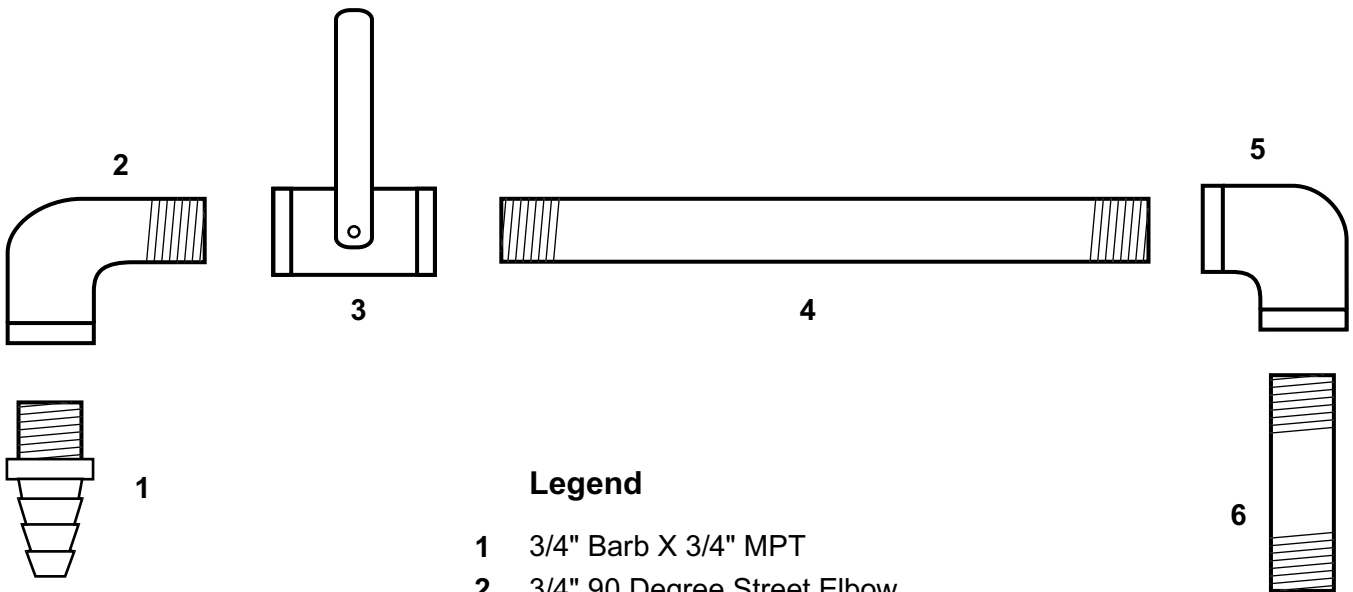


# THE RIVERSTONES™ PROCESSOR

## PROCESSOR ASSEMBLY



**THE RIVERSTONES™ PROCESSOR**  
**PROCESSOR ASSEMBLY "A" & PARTS LIST**

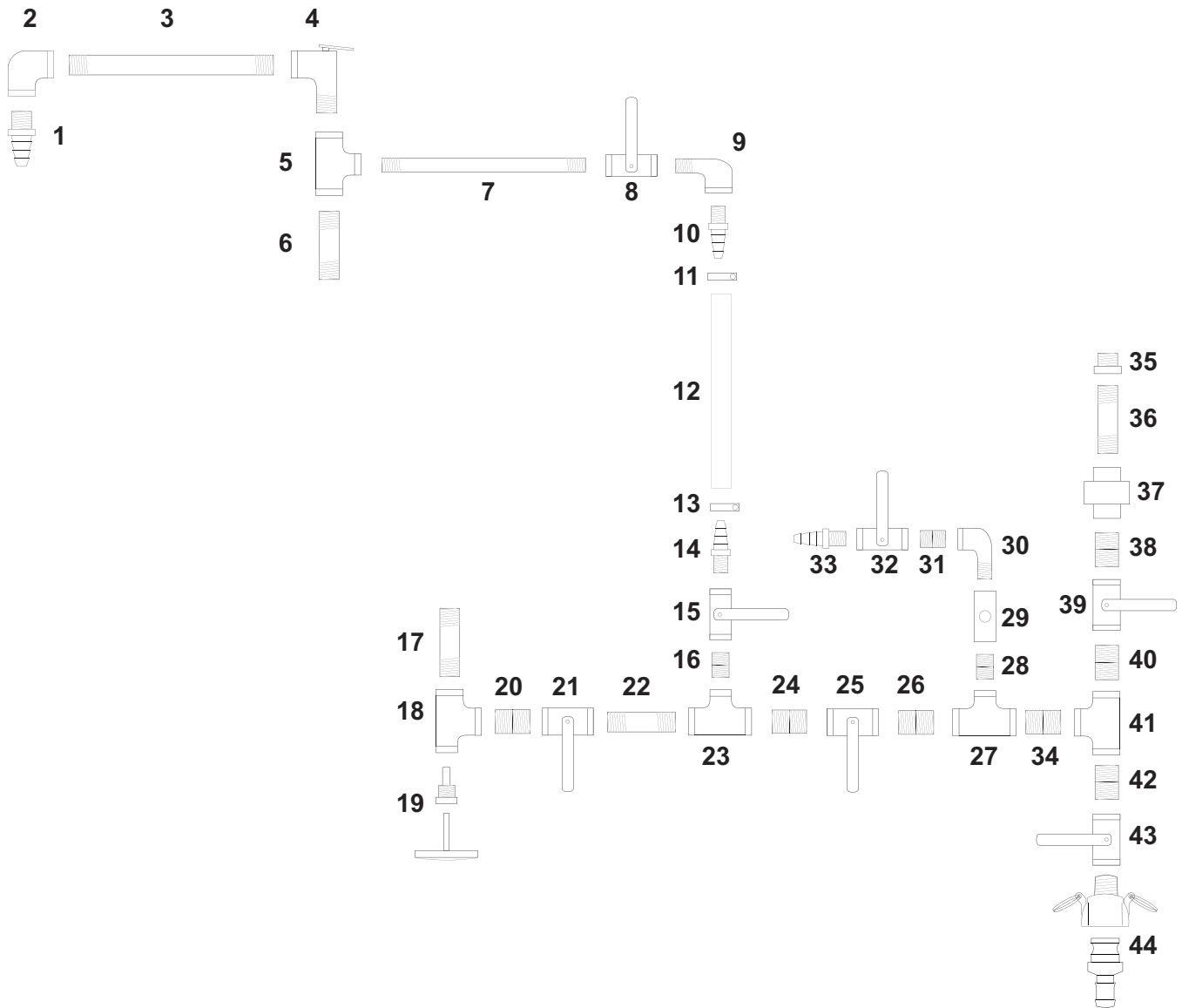


**Legend**

- 1 3/4" Barb X 3/4" MPT
- 2 3/4" 90 Degree Street Elbow
- 3 3/4" Full Port Threaded Ball Valve
- 4 3/4" X 9" Pipe
- 5 3/4" 90 Degree Elbow
- 6 3/4" X 3" Pipe

# THE RIVERSTONES™ PROCESSOR

## PROCESSOR ASSEMBLY “B”

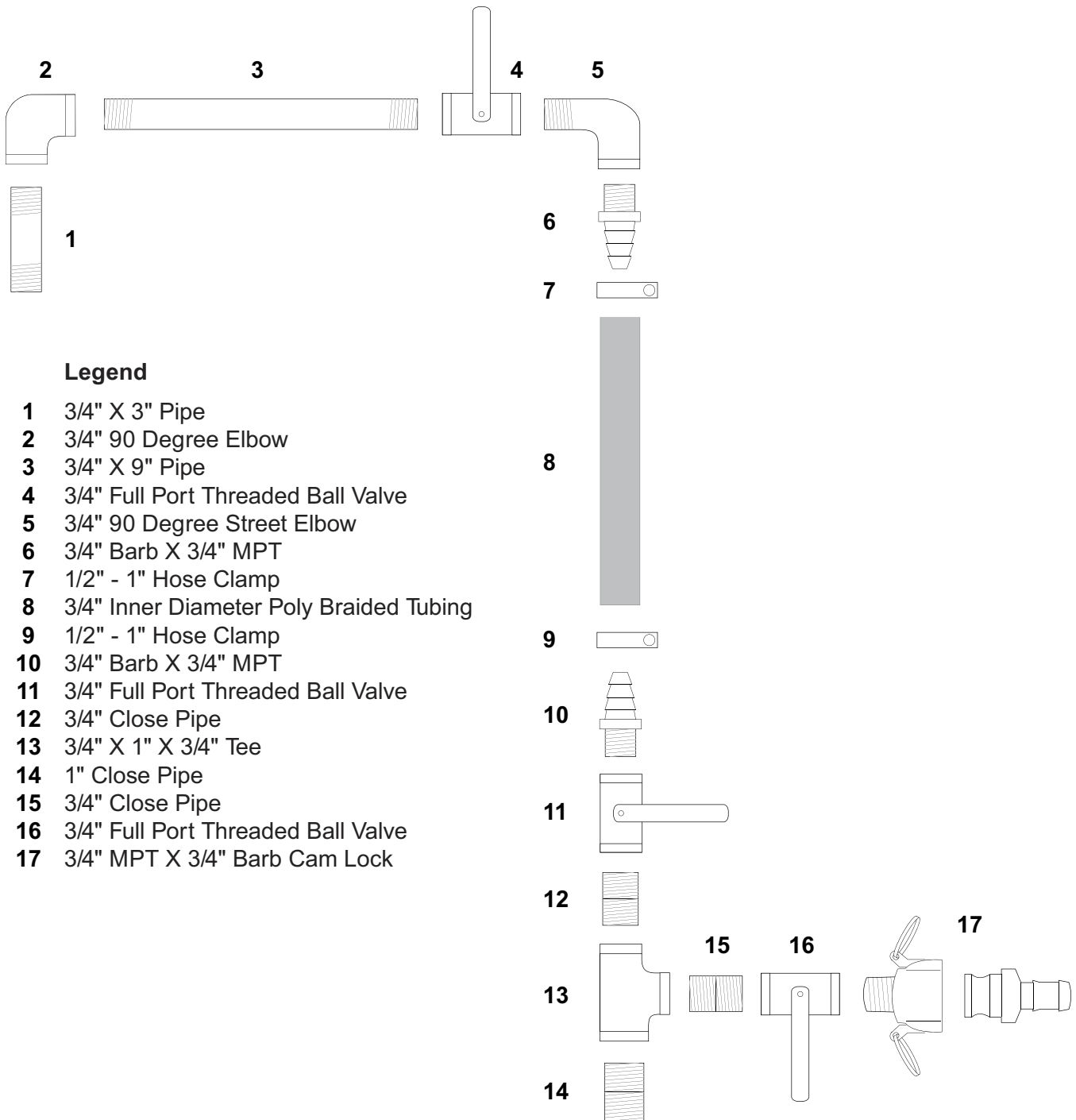


**THE RIVERSTONES™ PROCESSOR**  
**PROCESSOR ASSEMBLY “B” PARTS LIST**

- |           |                                    |           |                                    |
|-----------|------------------------------------|-----------|------------------------------------|
| <b>1</b>  | 3/4" Barb X 3/4" MPT               | <b>23</b> | 3/4" X 3/4" X 1/2" Tee             |
| <b>2</b>  | 3/4" 90 Degree Elbow               | <b>24</b> | 3/4" Close Pipe                    |
| <b>3</b>  | 3/4" X 12" Pipe                    | <b>25</b> | 3/4" Full Port Threaded Ball Valve |
| <b>4</b>  | 3/4" 30 PSI Pressure Relief Valve  | <b>26</b> | 3/4" Close Pipe                    |
| <b>5</b>  | 3/4" X 3/4" X 1/2" Tee             | <b>27</b> | 3/4" X 3/4" X 1/2" Tee             |
| <b>6</b>  | 3/4" X 3"                          | <b>28</b> | 1/2" Close Pipe                    |
| <b>7</b>  | 1/2" X 9" Pipe                     | <b>29</b> | 1/2" Swing Check Valve             |
| <b>8</b>  | 1/2" Full Port Threaded Ball Valve | <b>30</b> | 1/2" 90 Degree Street Elbow        |
| <b>9</b>  | 1/2" 90 Degree Street Elbow        | <b>31</b> | 1/2" Close Pipe                    |
| <b>10</b> | 1/2" Barb X 1/2" MPT               | <b>32</b> | 1/2" Full Port Threaded Ball Valve |
| <b>11</b> | 1/2" - 1" Hose Clamp               | <b>33</b> | 1/2" Barb X 1/2" MPT               |
| <b>12</b> | 1/2" Thick Wall Poly Tubing        | <b>34</b> | 3/4" Close Pipe                    |
| <b>13</b> | 1/2" - 1" Hose Clamp               | <b>35</b> | 1" X 3/4" Bushing                  |
| <b>14</b> | 1/2" Barb X 1/2" MPT               | <b>36</b> | 3/4" X 3" Pipe                     |
| <b>15</b> | 1/2" Full Port Threaded Ball Valve | <b>37</b> | 3/4" Threaded Union                |
| <b>16</b> | 1/2" Close Pipe                    | <b>38</b> | 3/4" Close Pipe                    |
| <b>17</b> | 3/4" X 3" Pipe                     | <b>39</b> | 3/4" Full Port Threaded Ball Valve |
| <b>18</b> | 3/4" X 1/2" X 3/4" Tee             | <b>40</b> | 3/4" Close Pipe                    |
| <b>19</b> | 1/2" MPT Dial Type Thermometer     | <b>41</b> | 3/4" X 3/4" X 3/4" Tee             |
| <b>20</b> | 3/4" Close Pipe                    | <b>42</b> | 3/4" Close Pipe                    |
| <b>21</b> | 3/4" Full Port Threaded Ball Valve | <b>43</b> | 3/4" Full Port Threaded Ball Valve |
| <b>22</b> | 3/4" X 3" Pipe                     | <b>44</b> | 3/4" MPT X 3/4" Barb Cam Lock      |

# THE RIVERSTONES™ PROCESSOR

## PROCESSOR ASSEMBLY "C" & PARTS LIST

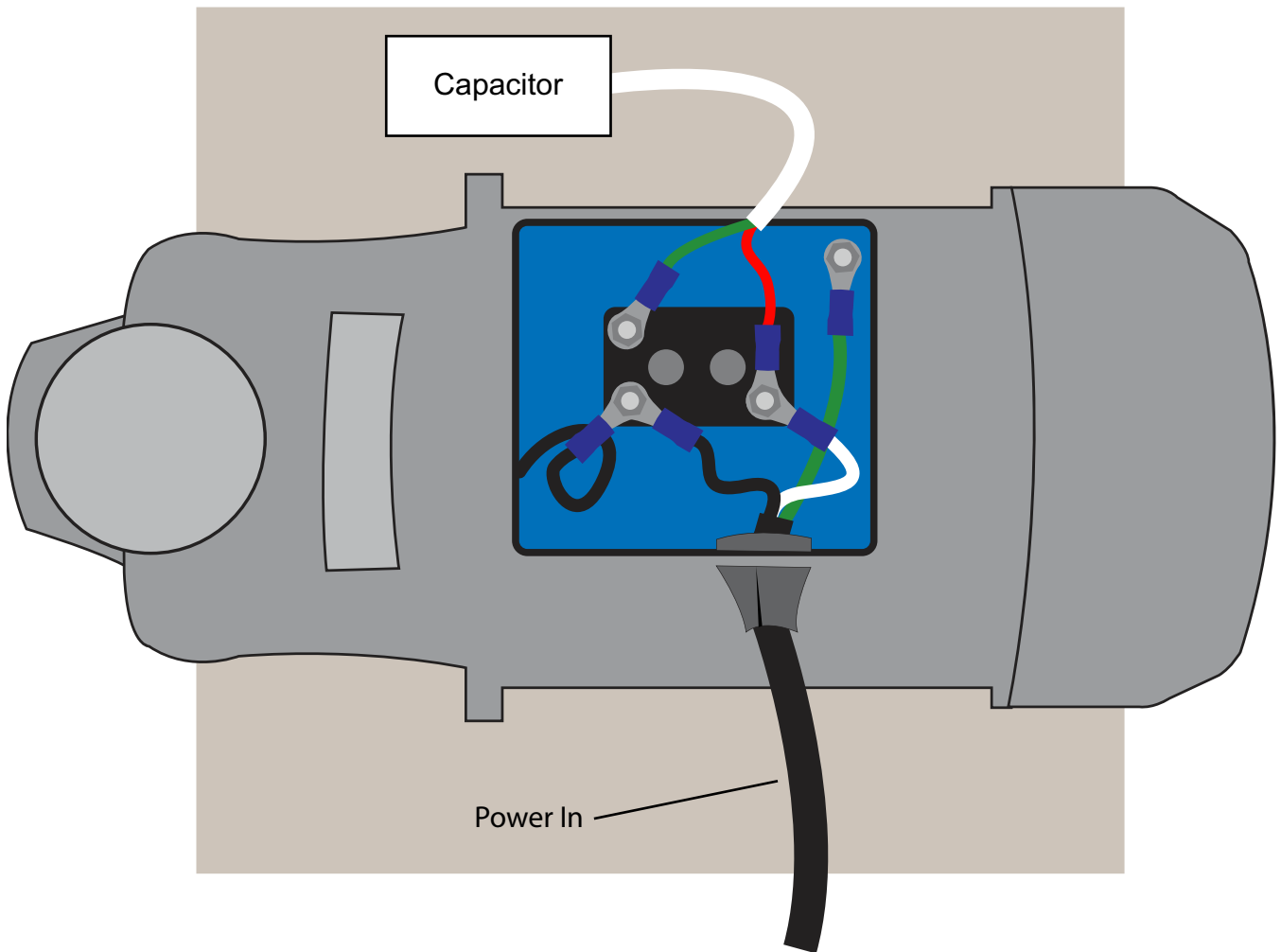


**Legend**

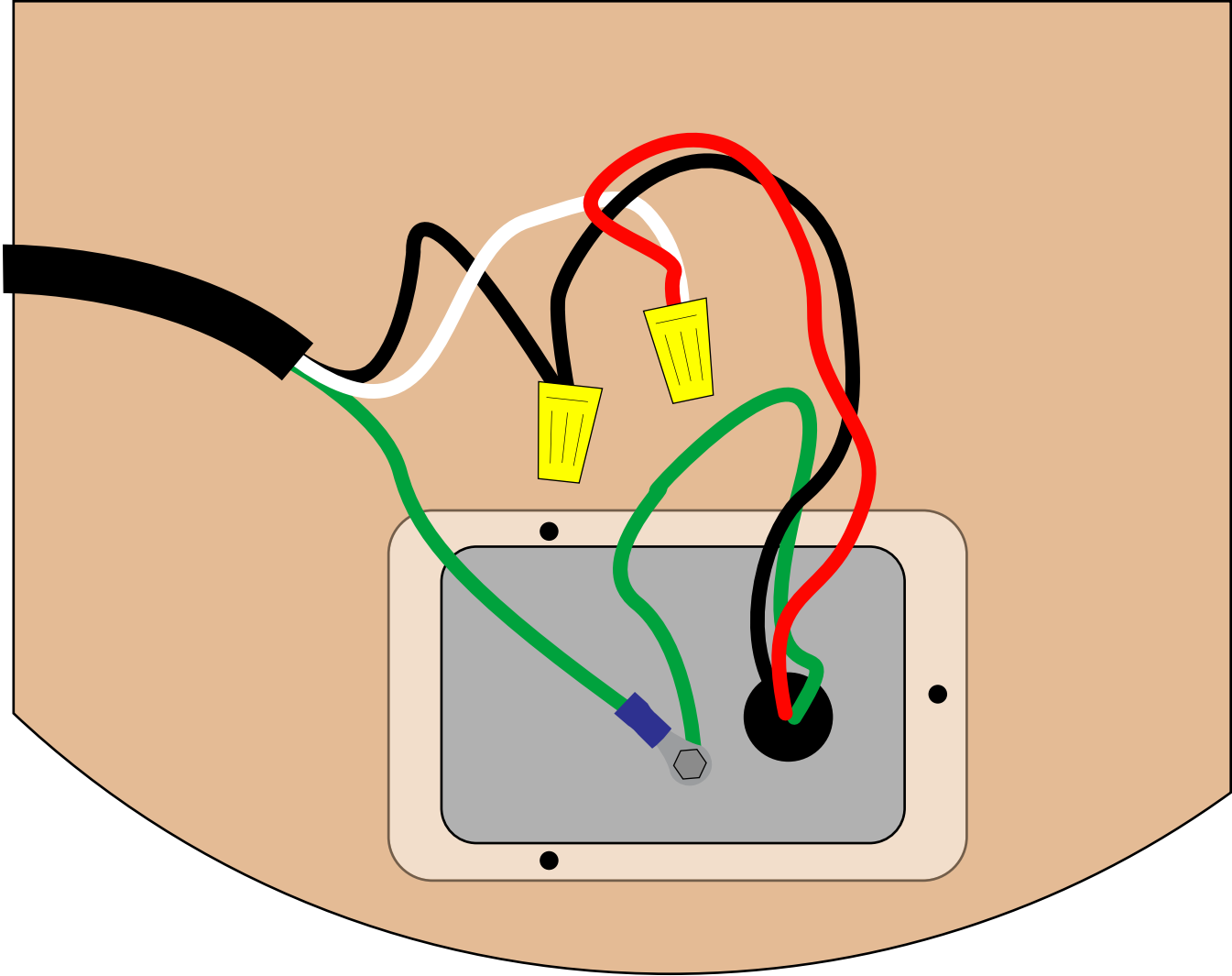
- 1 3/4" X 3" Pipe
- 2 3/4" 90 Degree Elbow
- 3 3/4" X 9" Pipe
- 4 3/4" Full Port Threaded Ball Valve
- 5 3/4" 90 Degree Street Elbow
- 6 3/4" Barb X 3/4" MPT
- 7 1/2" - 1" Hose Clamp
- 8 3/4" Inner Diameter Poly Braided Tubing
- 9 1/2" - 1" Hose Clamp
- 10 3/4" Barb X 3/4" MPT
- 11 3/4" Full Port Threaded Ball Valve
- 12 3/4" Close Pipe
- 13 3/4" X 1" X 3/4" Tee
- 14 1" Close Pipe
- 15 3/4" Close Pipe
- 16 3/4" Full Port Threaded Ball Valve
- 17 3/4" MPT X 3/4" Barb Cam Lock

# THE RIVERSTONES™ PROCESSOR

## PROCESSOR PUMP WIRING

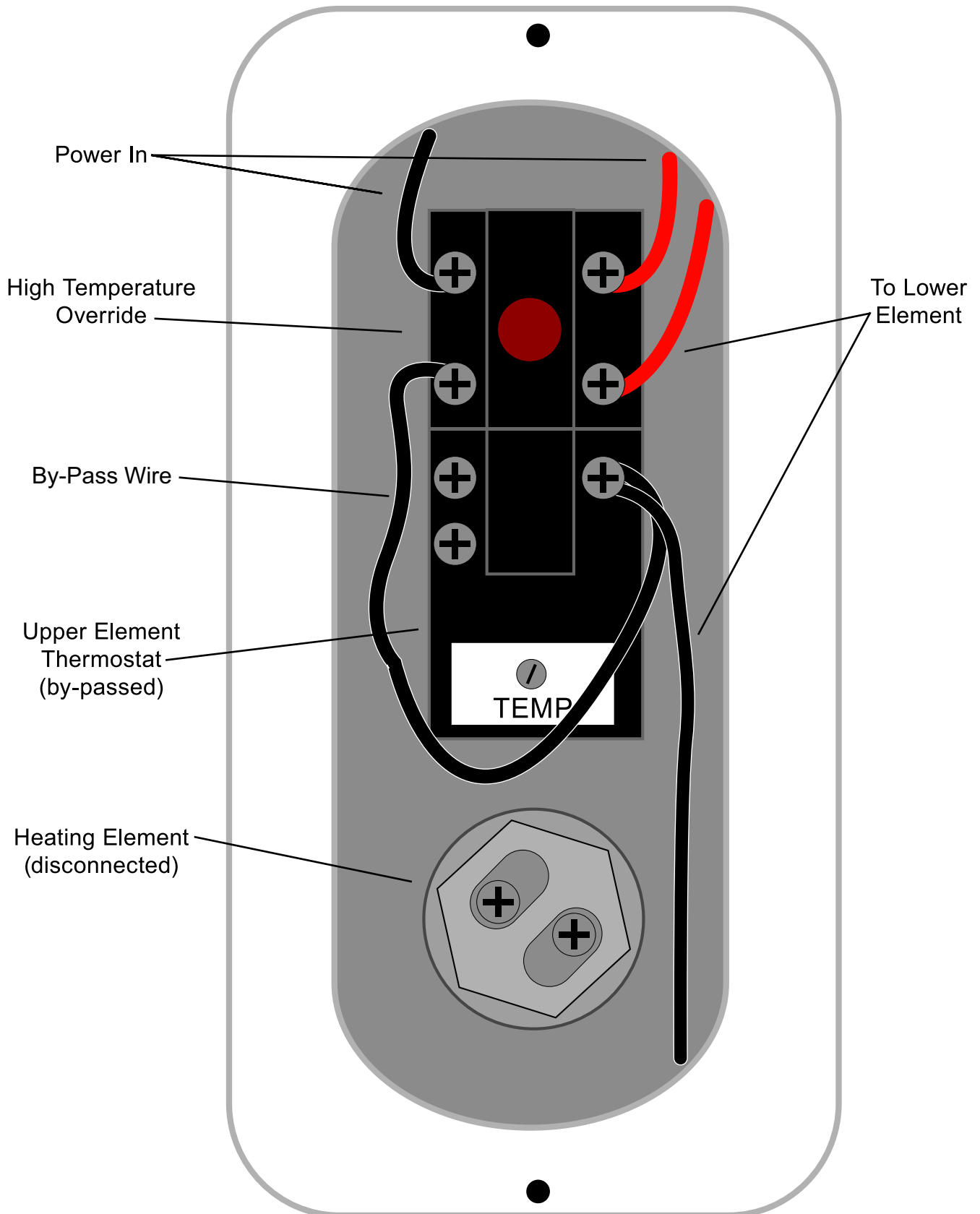


**THE RIVERSTONES™ PROCESSOR  
WATER HEATER POWER CONNECTION**



# THE RIVERSTONES™ PROCESSOR

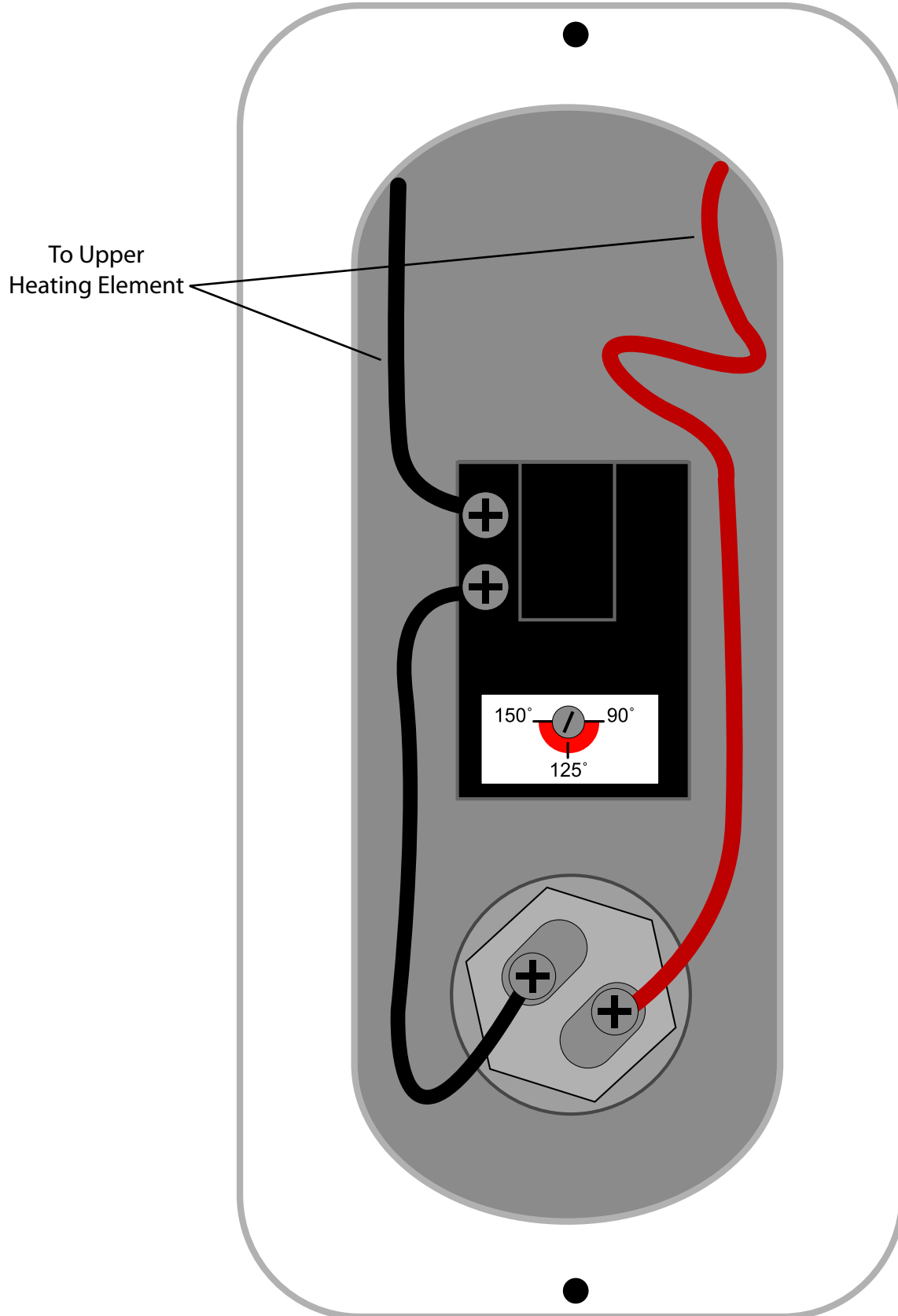
## UPPER HEATING ELEMENT





# THE RIVERSTONES™ PROCESSOR

## LOWER HEATING ELEMENT



# THE RIVERSTONES™ PROCESSOR

## METHOXIDE TANK ASSEMBLY

### Legend

- 1 1/2" Barb X 1/2" MPT  
(from Processor Assembly "B", part #33)
- 2 1/2" - 1" Hose Clamp
- 3 1/2" Thick Wall Poly Tubing
- 4 1/2" - 1" Hose Clamp
- 5 3/4" MPT X 1/2" Barb Cam Lock
- 6 Methoxide Tank Cap
- 7 Vent Cap

